

SPORTS





# FOOTBALL 1956



Front row: Coach Phillips, Coan, Dearing, Witte, Powitzky, Boyd, Maples, Wamble, Shephard, Cherry, Coach Brown. Second row: Crow, Razo, Vanderburg, Rice, Miller, Webb, D. Farmer, Herring. Third row: Choate, Broussard, Graham, Hall, T. Farmer, Tyner, Warner, Crenshaw, DeSoto. Fourth row: Phillips, Breeden, Dorsett, Holstein, Snow, Heitman, Matthews, Parker. Fifth row: Coach Bondy, Fritsch, Donaldson, Derrick, May, Gary, Newell, Coach Maguire.



Tri-Captains Larry May, Bill Donaldson, and Brad Derrick led the Eagles to a season record of 6 wins, 2 ties, and 2 losses.

## 1956 SCHEDULE

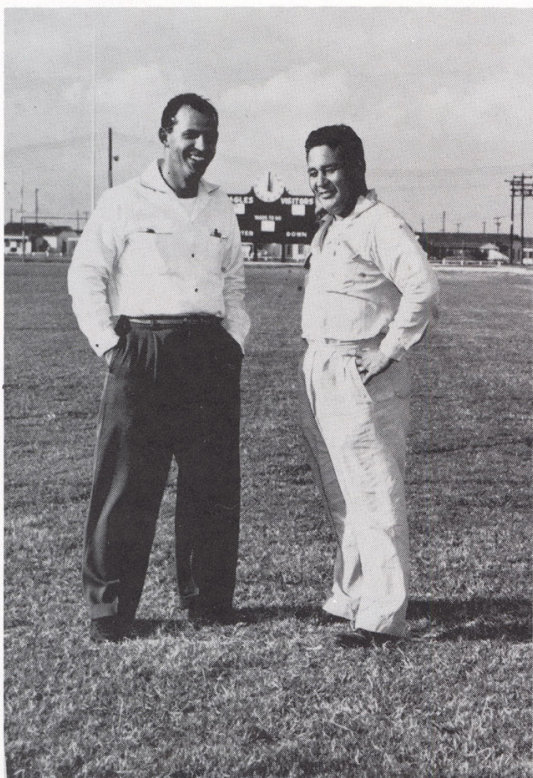
<i>Eagles</i>	<i>Opponent</i>
12	St. Thomas ----- 7
7	Ball High ----- 21
20	Lamar ----- 20
48	Laredo ----- 13
13	Port Arthur ----- 13
28	Brazosport ----- 0
35	Spring Branch ----- 6
33	Texas City ----- 0
20	Galena Park ----- 12
12	Baytown ----- 21

**COACH  
WELDON "STONEY" PHILLIPS**



Coach Phillips and his capable staff have done a tremendous job this year, for the Eagles achieved a 6-2-2 season mark and were runners up in the new district 12-AAAA. Pasadena is now a well established state power in 4-A football. We, the student body, are proud of a job well done.

**COACH BROWN  
COACH BONDY**



**LOGAN WOOD  
COACH MAQUIRE**





RANDALL DORSETT  
End



LARRY MAY  
Back



Morris Cherry, Larry May and Randall Dorsett bring down this St. Thomas back.

PASADENA—12 ST. THOMAS—7

The Eagles finished fast to gain a 12 to 7 victory in the season opener against St. Thomas.

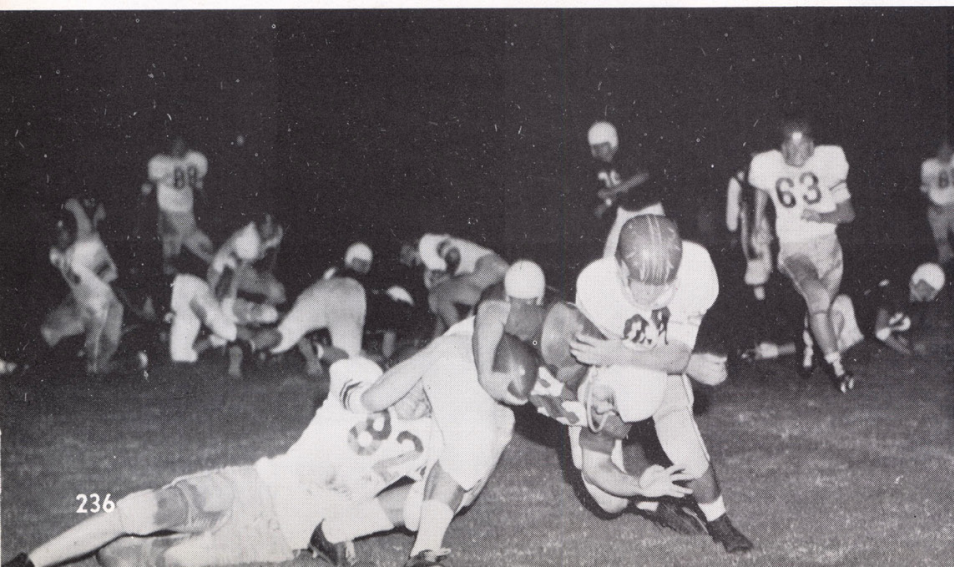
With Bert Coan, Phillip Breeden, and Charles Hall leading the way the Eagles marched to the 2 yard line where Hall took over. Morris Cherry's extra point try was blocked. Hard running Bert Coan intercepted a St. Thomas pass and returned it to the Eagle 32. From this point the Eagles moved to another score with Howard Rice carrying the last four yards.

Brad Derrick, Bill Donaldson, and Randall Dorsett led the Eagles on defense.

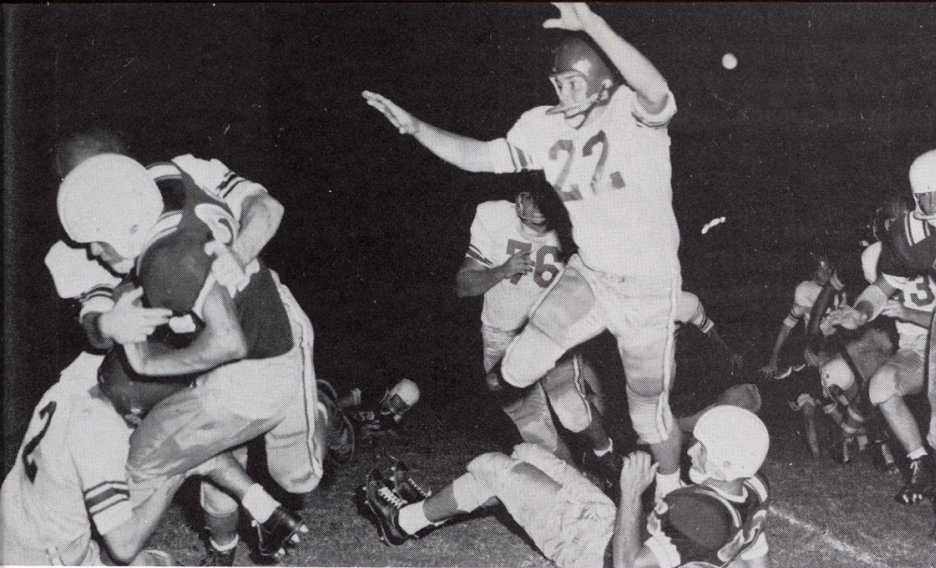


PAUL HERRING  
Guard

Bennie Heitman and Brad Derrick hit hard.



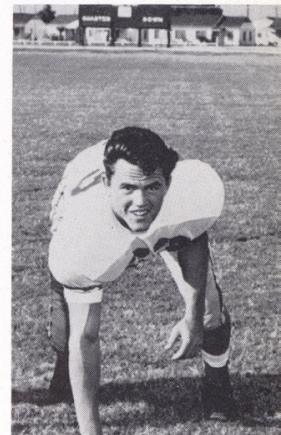
THOMAS FARMER  
Tackle



Look out Tors, here comes Larry May.



PHILLIP BREEDEN  
Back



ROGER PARKER  
Guard

### PASADENA—7      BALL HIGH—21

Deadly afoot and in the air, the Ball High Tors handed the Eagles their first defeat of the season.

Ball High scored first with two and half minutes gone in the second quarter. The Eagles returned the kickoff to their 30 yard line, where, Bert Coan found a hole over right tackle and galloped 70 yards for a touch-down. The extra point was good and the score stood 7 to 7. Ball scored with less than a minute remaining in the half to make it 14 to 7.

The Tors scored again in the third quarter. Pasadena threatened but their efforts were stymied as the gun sounded with the scoreboard reading Ball High 21, Eagles 7.



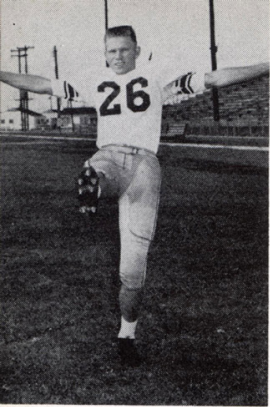
CARL CHOATE  
End



KEN VANDERBURG  
End

Cherry and Derrick make tackle.





CURTIS MATHEWS  
Back



BENNIE HEITMAN  
End



WARREN TYNER  
Back



EDDIE GRAHAM  
End  
238



Charles Hall sneaks for a score against Lamar.

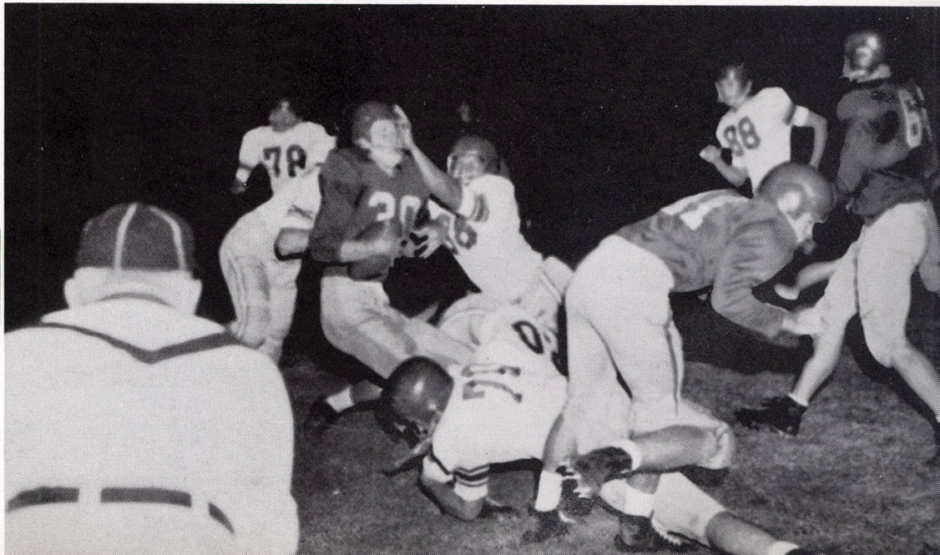
PASADENA—20      LAMAR—20

The high flying Eagles battled the Lamar Redskins to a 20 to 20 tie before 6000 witnesses. David Hamilton scored all of Lamar's twenty points, two on runs of 18 and 33 yards and the third coming on a 13 yard pass from John Wolfe.

Charles Hall scored two Eagle touchdowns as he climaxed Eagle drives of 52 and 74 yards, by sneaking over from the two and one yard stripes respectively. David Webb intercepted a Lamar pass and returned it 16 yards for a Pasadena touchdown.

The Eagles' defensive corps was led by Theo DeSoto, Bill Donaldson, and Brad Derrick.

DeSoto, Miller, and Wamble bring down a Lamar back.





Donaldson (56), Powitzky (76), and Maples (24) arrive just in time.

PASADENA—48 LAREDO—13

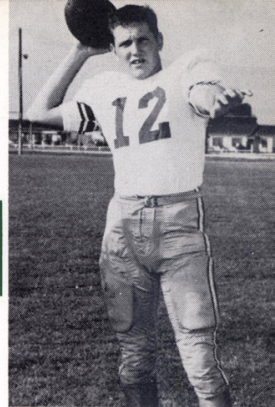
Pasadena's flashing speed swept past the Laredo Tigers 48 to 13 to give the Eagles their second win of the season.

Longlegged Bert Coan paced the Eagle attack, scoring four times on runs of 43, 56, and 36 yards and added a fourth score on a pass from Larry May.

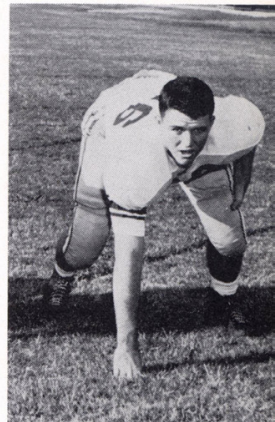
Coach Phillips cleared the bench, but the score mounted as David Webb and Larry Witte counted scores in the fourth quarter. End Brad Derrick also got into the scoring act as he covered a Tiger fumble in the end zone.

Curtis Matthews kicked six out of seven extra points as the Eagles gave an example of their strong offense.

This Laredo back is hit hard by Brad Derrick.



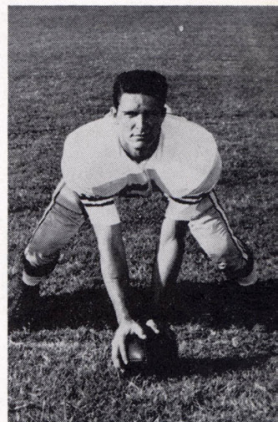
CHARLES HALL  
Back



BILL DONALDSON  
Tackle



HOWARD RICE  
Back

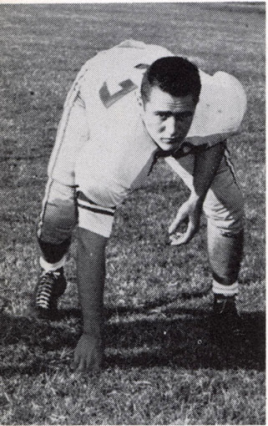


RICHARD SHEPHERD  
Center 239





DWAYNE WARNER  
Center



DAVID BOYD  
Guard



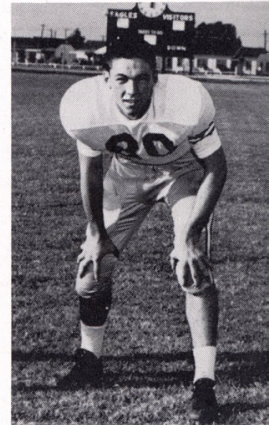
Strong Eagle defense holds against Port Arthur.

PASADENA—13      PORT ARTHUR—13

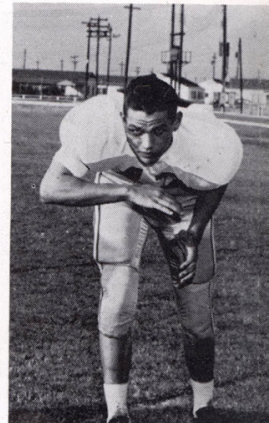
The Pasadena Eagles overtook the Port Arthur Yellow-jackets with only a little more than a minute left in the fourth quarter to gain a 13 to 13 tie. Port Arthur scored early in the first quarter driving 69 yards in 15 plays. The Big Green came back in the third quarter and went 94 yards, with Charles Hall carrying the last three yards for the score.

The Jackets went ahead 13 to 6 when they climaxed their 65 yard drive as Homer Newman dived two yards. The Eagles tied up the game as they mached 63 yards with a 26 yard pass from Larry May to Bert Coan putting the ball on the eight. End Carl Choate made a diving catch of Larry May's pass in the end zone for the final score.

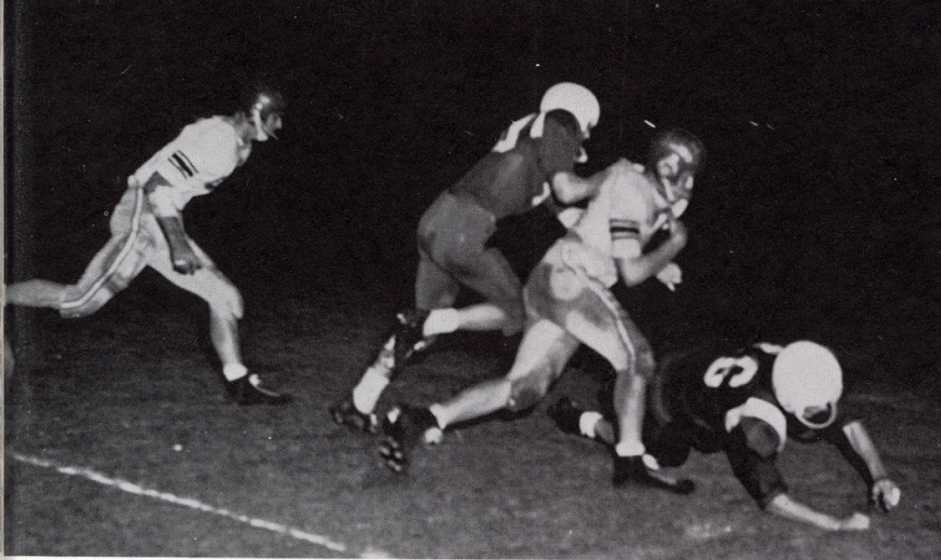
Coan on his way to an Eagle touchdown.



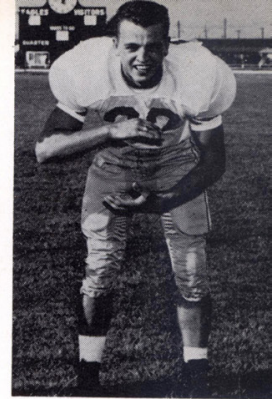
BRAD DERRICK  
End



CARL PHILLIPS  
Back



Randall Dorsett and Jack Derring show defensive alertness.



EAMEAL HOLSTEIN  
Back



JOE RAZO  
Guard

## PASADENA—28      BRAZOSPORT—0

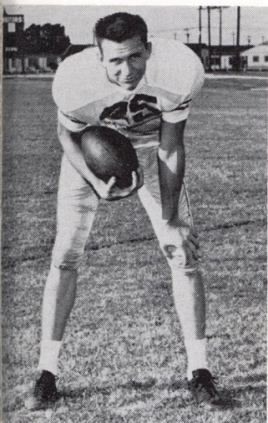
Combining an air attack with its precision ground game, the Pasadena Eagles slapped the Brazosport Exporters 28 to 0. It was the district 12 AAAA opener for both schools.

Brazosport, never able to reach beyond the Pasadena 35, made a pair of mistakes in the third period and the Eagles exploited both of them. First it was a fumble at the Freeport 26. Larry May chipped off 15 yards on the first try, then the Eagles scored five plays later on Bert Coan's one yard dive. In the same period Frank Wamble recovered a Freeport fumble on the kickoff and the Eagles pushed over another score with Eameal Holstein carrying.

David Webb gathered in an Exporter punt at his own 20 and went 80 yards for another Eagle score. Jackie Dearing returned an intercepted pass to the five where Carl Phillips earned the last touchdown.



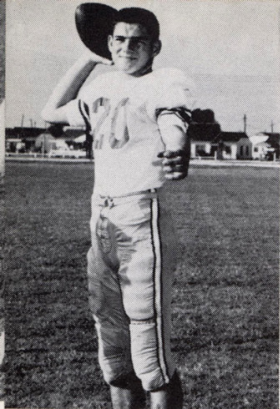
BOBBY CHRENSHAW  
Guard



BERT COAN  
Back

The Eagles score again.





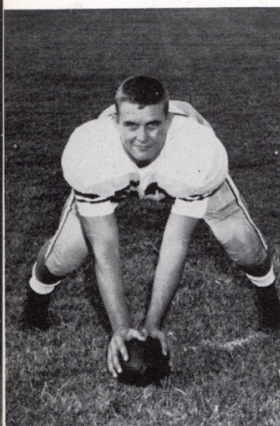
DAVID WEBB  
Back



THEO DESOTO  
Guard



THOMAS MAPLES  
Back



DALTON FARMER  
Center  
242



Bert Coan outruns Spring Branch defense.

### PASADENA—35      SPRING BRANCH—6

The Pasadena Eagles turned a close game into a 35 to 6 runaway as they chalked up their third district win of the season over the Spring Branch Bears. The Bears held the heavier, faster Eagles to a 7 to 0 margin at half-time, but in the second half Bert Coan loped for four identical touchdowns, covering distances of 50, 13, 43, and 29 yards. Each time it was the same play which sprung Coan into the open, a delayed slant through right tackle, with excellent help from the Eagle forward wall.

Spring Branch scored their lone touchdown four minutes deep in the third period as Jimmy Brents went 42 yards up the middle. Eameal Holstein tacked on another Eagle marker as he climaxed a 77 yard drive. Frank Wamble stole a Spring Branch pass after the kick-off and Coan made his 43 yard trip to swell the total to 25 to 6. Curtis Mathews kicked five of six extra points for the Eagles.

Dalton Farmer and Dave Webb stop the Bears.





Texas City cannot stop elusive Bert Coan.

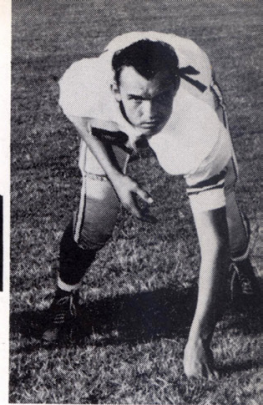
### PASADENA—33      TEXAS CITY—0

It was the second district win for the Pasadena Eagles as they whitewashed the Stringarees of Texas City 33 to 0.

Larry May got the Eagles started on the touchdown trail with a 10 yard scoring romp four minutes deep in the first period. Then Bert Coan crashed over from the one to cap a 78 yard drive in the waning moments of the second quarter.

In the third quarter it was Coan again as he carried 23 yards for another Eagle counter. May scored his second touchdown of the night as he drove up the middle for 36 yards to make the score 26 to 0. Charles Hall broke the Coan-May monopoly when he crashed over from the two with but one minute remaining in the game.

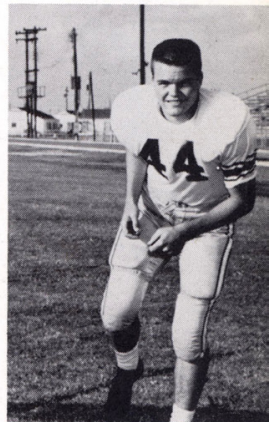
Coan picks up Eagle yardage.



JACKIE DEARING  
Tackle



FRANK WAMBLE  
End



JIM SNOW  
Back



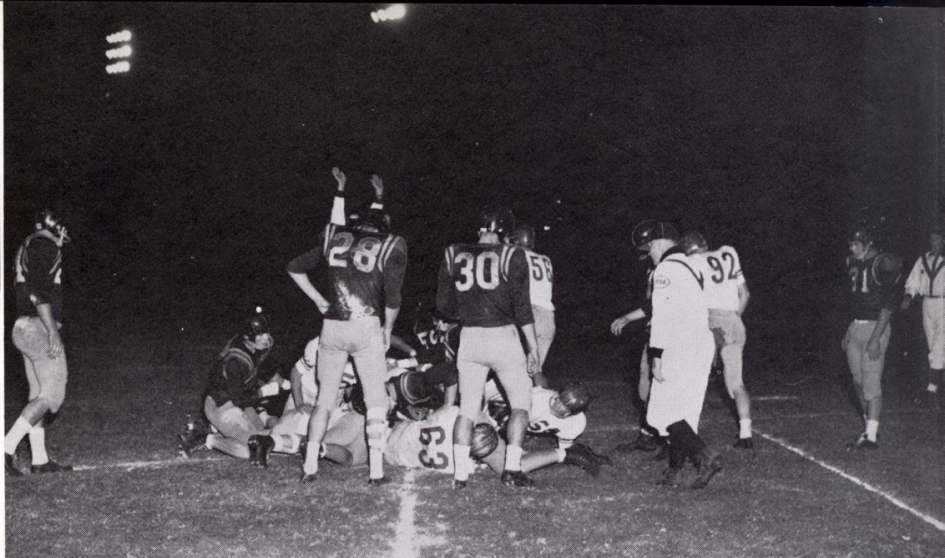
LAWRENCE BROUSSARD  
Back



SCOTTIE CROW  
Back



JOE MILLER  
Tackle



Pasadena scores against the Jackets.

PASADENA—20      GALENA PARK—12

An equally balanced land and air attack, led by Larry May and Bert Coan, gave the Eagles a 20 to 12 win over the Galena Park Yellowjackets.

The Jackets held the potent Eagles to a 6 to 6 tie at halftime but Pasadena's speed asserted itself in the second half. The Eagles took a 6 to 0 lead in the second period as Larry May scored on a drive from the one.

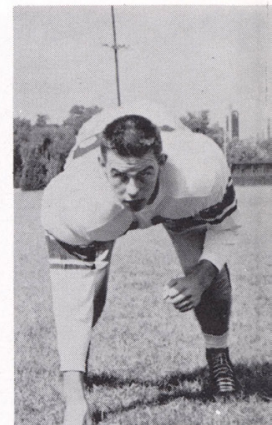
Galena Park took the kickoff and moved 65 yards for their first score. With just 1:55 gone in the third period, Coan crashed over right tackle and loped 50 yards for the touchdown.

The Eagles put the game on ice midway in the final quarter with May passing to Coan 49 yards for the score. The Jackets pushed over another marker in the fading minutes of the game to make the score 20 to 12.



DAVID POWITZSKY  
Tackle

May, Farmer, and Dorsett stop the Jackets.



LARRY WITTE  
End



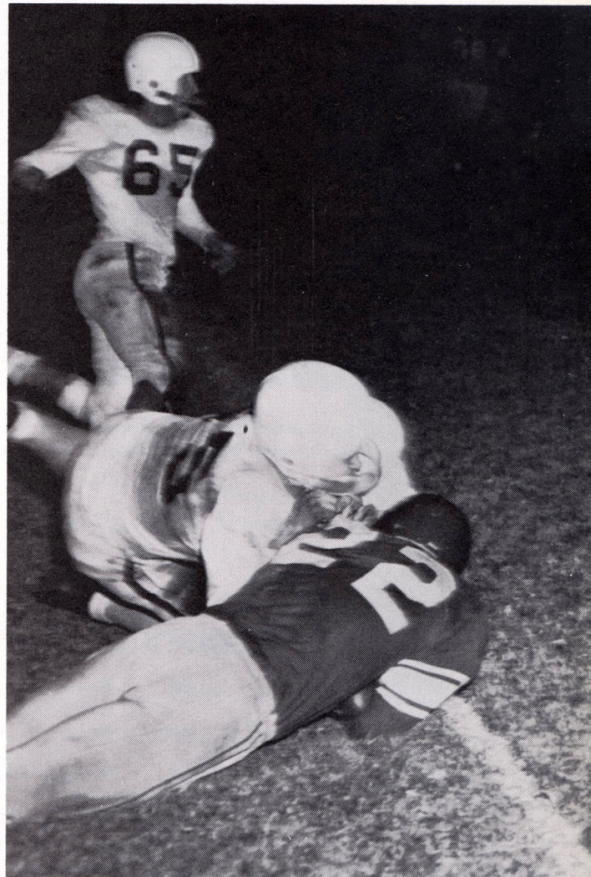
Broussard makes the tackle.

PASADENA—12      BAYTOWN—21

The Baytown Ganders took a 21 to 0 halftime lead and clung on desperately to preserve a 21 to 12 victory over the Eagles. Baytown scored the first two times they handled the ball on drives of 49 and 70 yards, and hit the Eagles again with a neat triple reverse to carry 29 yards for another counter.

The never-say-die Eagles found themselves in the second half. In the fourth period Bert Coan climaxed a 86 yard drive with a dive from the one for the score. Curtis Mathews extra point try was blocked. With 2:27 left to play in the game, long-striding Coan went inside his own right end, slanted to the sideline, then changed directions, and raced 71 yards.

That was the end of the scoring as the Ganders won the District 12 AAAA title and the Eagles were runners-up for the third consecutive year.



Larry May is hit hard by Gander Bill Laughlin.



Bert Coan is downed.

# BASKETBALL 1956 - 57

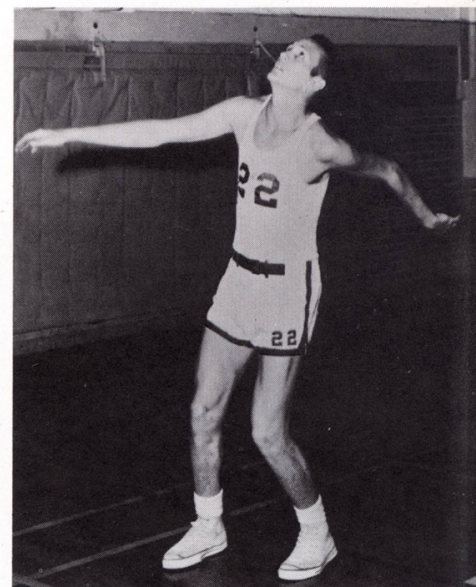


First row: Holmes, Frazier. Second row: Webb, Hall, Coach Carter, Lomax, Wamble, Smith.  
Third row: Winegar, Choate, Thompson, and Campo.

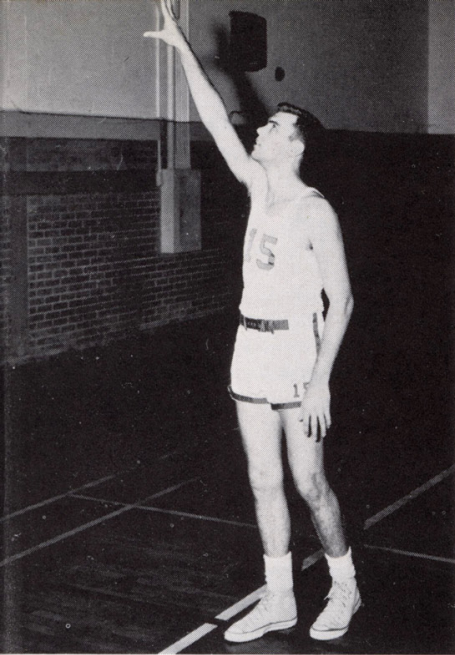


## 1957 DISTRICT SCHEDULE

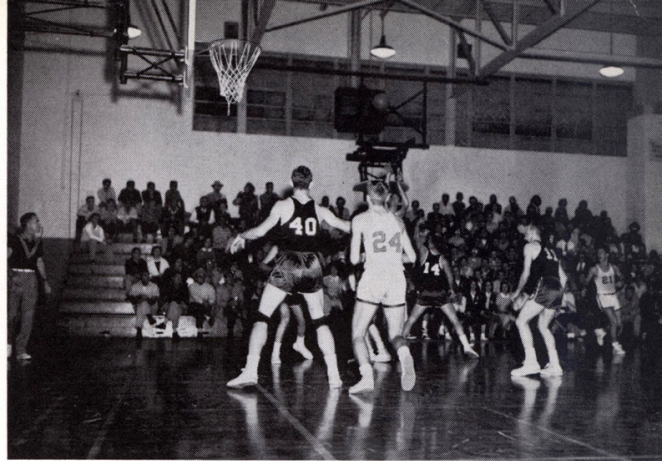
Eagles.....	40	Baytown .....	47
Eagles.....	60	Brazosport .....	37
Eagles.....	66	Spring Branch .....	53
Eagles.....	50	Galena Park .....	65
Eagles.....	53	Texas City .....	48
Eagles.....	55	Baytown .....	41
Eagles.....	62	Brazosport .....	51
Eagles.....	44	Spring Branch .....	57
Eagles.....	52	Galena Park .....	46
Eagles.....	65	Texas City .....	66



SILVA HOLMES  
Senior  
All-District



BEVIS FRAZIER  
*Senior*  
Guard



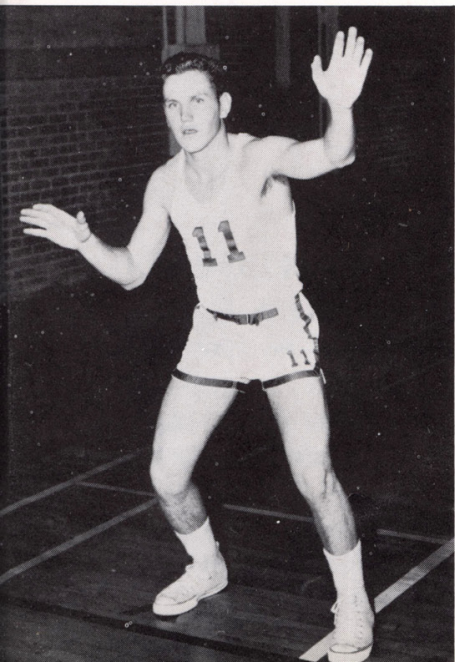
Holmes hits for the Eagles!

### BAYTOWN DEFEATS EAGLES

The Baytown Ganders squeezed past the Eagles 47 to 40 in both teams first district game.

The Eagles were led in scoring by Silva Holmes and Don Winegar, who tallied ten points each. Charles Hall, Bevis Frazier, and Ray Thompson played a fine defensive game for Pasadena.

CHARLES HALL  
*Senior*  
Guard



Silva attempts his jump.







Frazier shoots a long one.



Holmes defends as Thompson sets for rebound.

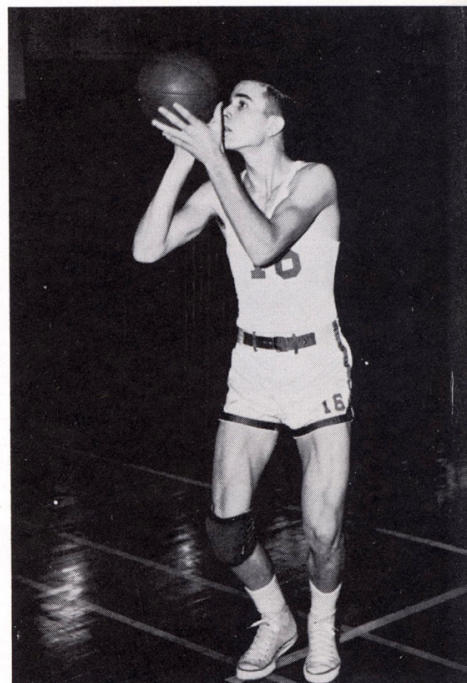


## EAGLES STUN BRAZOSPORT

Playing their first district game on their home floor, the Pasadena Eagles walloped the Exporters from Brazosport 60 to 37.

Big Silva Holmes paced the Eagle offense, scoring twenty points, while Charley Hall followed with twelve.

Brazosport's all-district forward, Jerry Spence, scored almost all of his team's points, hitting sixteen. The Eagles were never behind in this contest, which saw them pick up their first win in district play.



RAY THOMPSON  
*Junior*  
Forward

## EAGLES BREEZE BY SPRING BRANCH

The Pasadena Eagles got off to a flying start, and were never headed as they defeated the Spring Branch Bears 66 to 53.

The Bears, preseason favorites of district 12-AAAA, never lived up to what they were supposed to be, as the fine play of the Eagles overwhelmed them.

As in previous games, Silva Holmes was the big scorer for Pasadena picking up nineteen points. Bert Coan had sixteen, and Charles Hall fourteen.

## GALENA PARK DEFEATS EAGLES

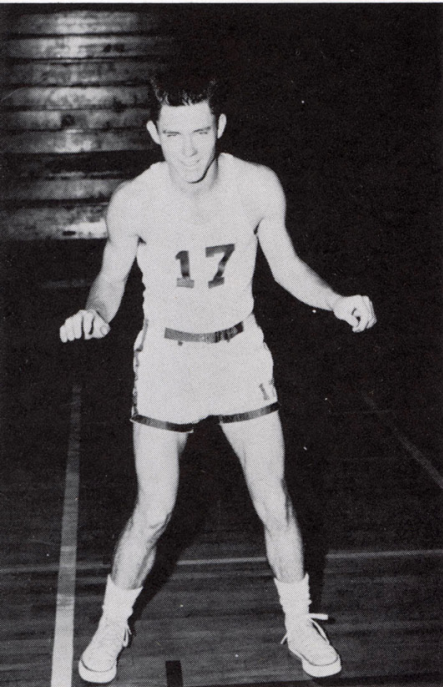
The Galena Park Yellowjackets couldn't miss many and defeated the Eagles 65 to 50.

The Jackets picked up their fourth straight district win in beating the Eagles. The Eagles found it slow going in the first half, for they couldn't hit their shots, while Galena was hitting better than sixty per cent of theirs.

Little Don Winegar, sophomore guard, played a great game for Pasadena, scoring eighteen points.



Winegar goes up for a shot.



MIKE SMITH  
*Junior*  
Guard



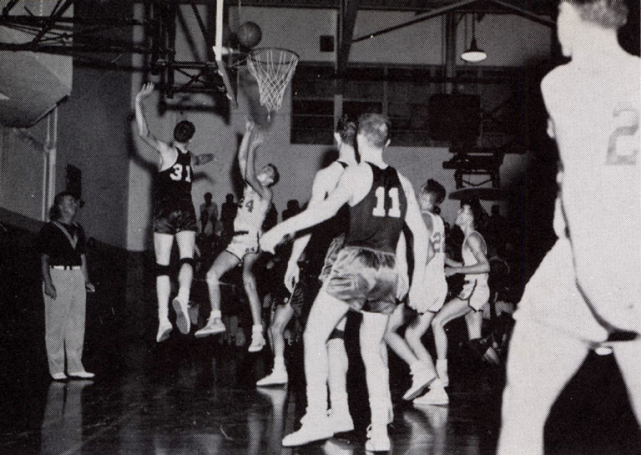
A scramble for the rebound.

## EAGLES TRIP TEXAS CITY

The Pasadena Eagles clung to an early lead, to defeat the fast-finishing Texas City Stingarees 53 to 48.

Silva Holmes's 17 point production paced Pasadena's wide-open offense. Carl Choate also helped the Eagle cause hitting 12 points.





Carl Choate in with a crisp shot.

## EAGLES RACK BAYTOWN

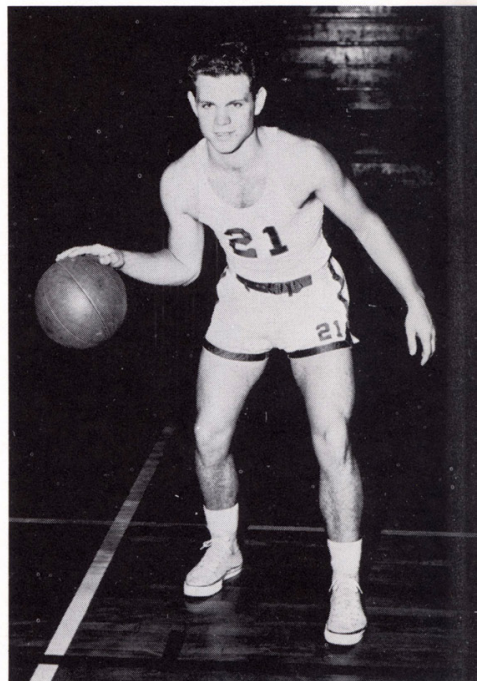
The Eagles, playing to avenge their defeat earlier in the season by the Ganders, did so very well as they dumped them 55 to 41.

The big gun in the Eagle attack was Silva Holmes. He scored twenty points, mostly on hook shots and tip-ins. Ray Thompson contributed 11 points for Pasadena.

The Ganders were paced by their all-district sharpie, Ken Woods, who made sixteen.



DON WINEGAR  
*Sophomore*  
 Guard  
*Second Team All-District*



Choate goes high for tip-in.



## EAGLES RACE BY BRAZOSPORT

Winning their fifth district game in seven starts, the Eagles outscored Brazosport 62 to 51.

The hard-fighting Eagles were not to be denied as they controlled both backboards and played a good defensive game.

Silva hit his season high in district play, which was 23 points. Donnie Winegar followed with 17. Charley Hall, Carl Choate, and Bevis Frazier also contributed much for the Eagles.

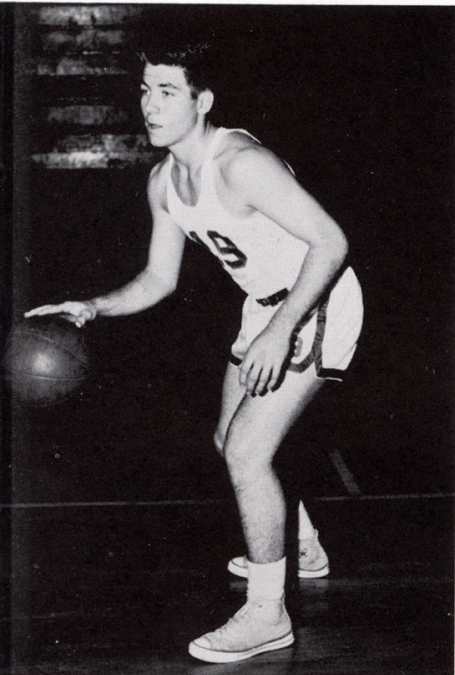
## EAGLES FALL TO SPRING BRANCH

The Bears from Spring Branch played one of their best games of the season to defeat the Pasadena Eagles 57 to 44.

The chief factor in their victory was their accuracy at the free-throw line where they hit almost seventy percent of their free throws. The Bears were paced by Brian Hildebran and Del Ready, who collected ten points each.



Winegar defends as Bears try for a basket.



FRANK WAMBLE  
*Junior*  
Guard

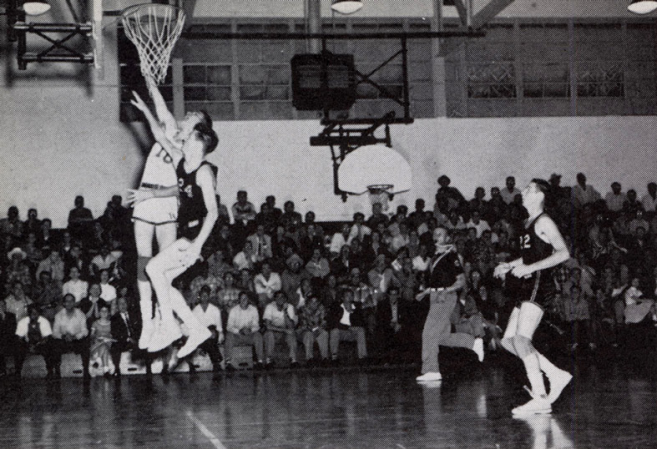


This was the Eagles' eighth district game, and at the time they had a 5-2 district record. The loss did not dampen their hopes for a district title, for they were still in contention.

Don Winegar popped through eighteen points for Pasadena, and Carl Choate and Silva Holmes grabbed the Eagle rebounds.

Two points for Charley Hall.





Ray Thompson scores for Eagles.

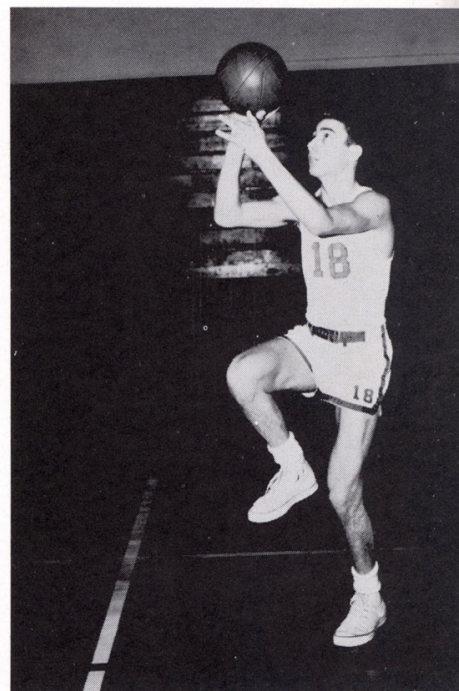
## EAGLES TROUNCE GALENA PARK

This one was a sweet victory for the Eagles as they knocked off the league-leading Yellowjackets, 52 to 46.

The Jackets had won eight straight district games before being humiliated by the Eagles. It was almost a perfect game for the Eagles, before a packed gym, for they could do no wrong.



AL CAMPO  
*Junior*  
Forward

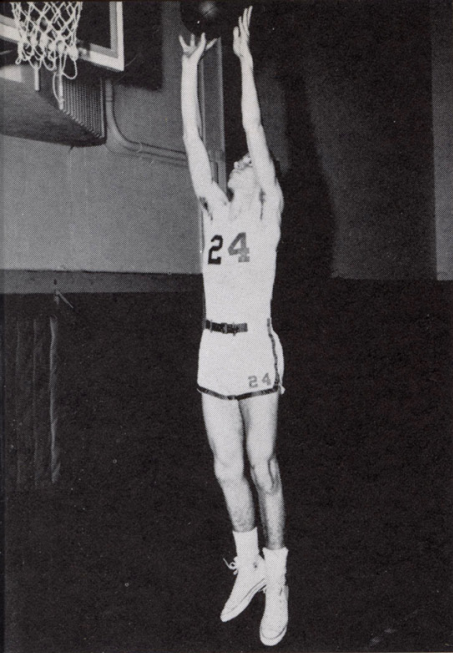


Choate and Thompson fight for rebound.

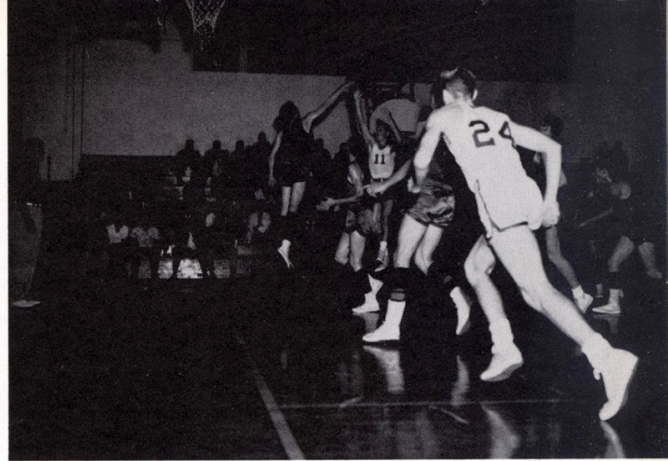


Ray Thompson, six feet one inch junior, played a great game for the Big Green as he controlled both backboards and swished the nets for 21 points.

The Eagle defense held Galena's big scorer, David Warnell, to 16 points. Charles Hall, Carl Choate, and Silva Holmes did a fine job for Pasadena, as this was Galena's only loss in ten district games.



CARL CHOATE  
*Sophomore*  
Forward



Carl Choate moves in, as Hall tries a jump shot.

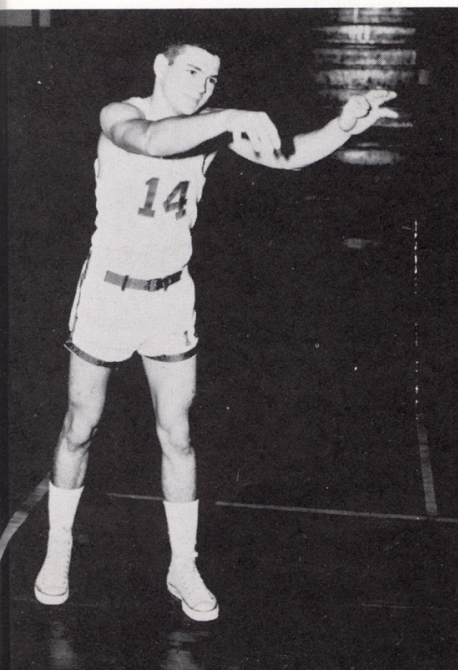
### TEXAS CITY EDGES EAGLES

This was one of the most exciting games for the Eagles during the whole season. The Texas City team displayed a wide-open offense as they downed the Eagles 66 to 65.

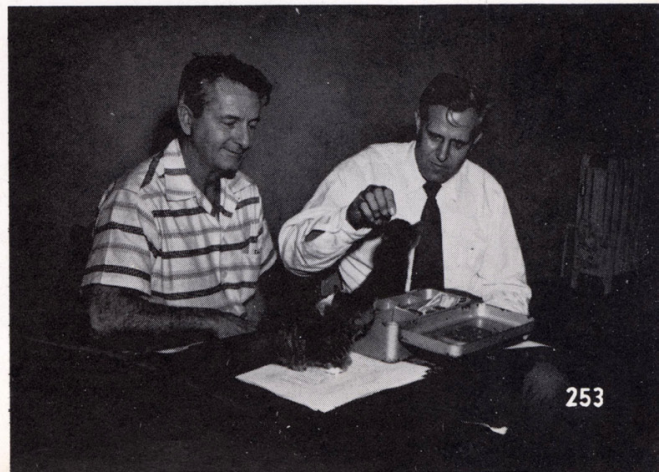
In the waning moments of play it looked like an Eagle victory, as Charles Hall stole the ball and raced downcourt. With two seconds left, Hall had to shoot off balance, and the ball rolled off the rim.

This was the end of a fine season of basketball for Pasadena as they finished with a district record of six wins and four losses.

DAVID WEBB  
*Sophomore*  
Forward



Mr. Ralph Stafford, and Mr. John Pickens are visited by unexpected guests at the cashbox.



# "B" TEAM BASKETBALL



First row: Kerbow, Tyner. Second row: Coach Jack Fink, Robinette, Ripley, Boeger, Cherry, Holleman, manager. Third row: Funderburg, Goehring, Shelby, Brown, Jones, and McGowan.

## 1957 DISTRICT SCHEDULE

Eagles.....	41	Baytown .....	62
Eagles.....	77	Brazosport .....	46
Eagles.....	32	Spring Branch .....	39
Eagles.....	42	Galena Park .....	57
Eagles.....	44	Texas City .....	38
Eagles.....	41	Baytown .....	56
Eagles.....	65	Brazosport .....	37
Eagles.....	36	Spring Branch .....	46
Eagles.....	53	Galena Park .....	52
Eagles.....	61	Texas City .....	47

# TRACK 1957

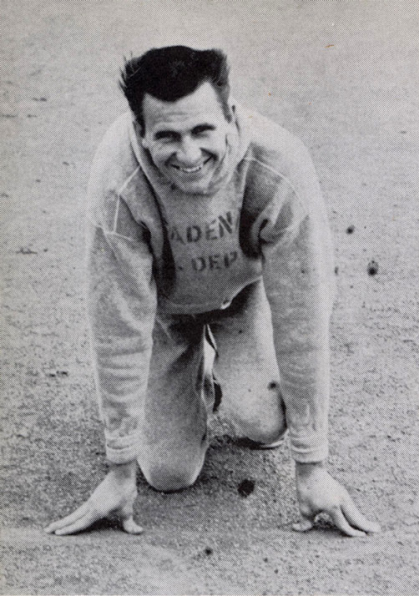


Possibilities look bright for Coaches Allan Brown and Harry Morgan as seven lettermen return off of a team that won the district championship, and placed second in the state in '56.

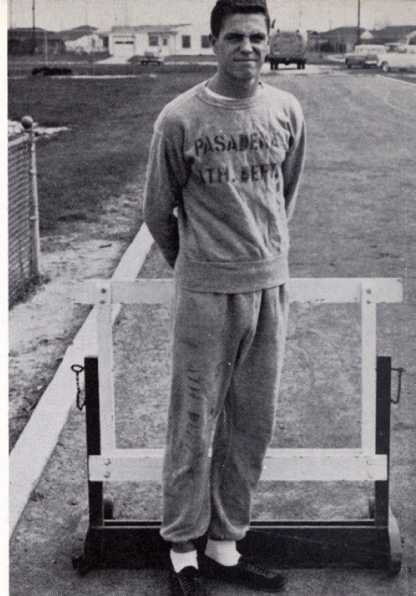


Coaches Brown, left, and Morgan with returning lettermen. First row: Maples, May, Cherry. Back row: Earley, Coan, Witte, Redwine.





BERT COAN  
*Junior*  
Sprints



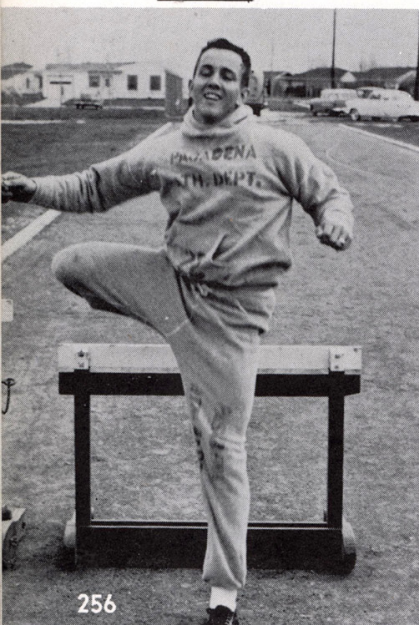
ROBERT REDWINE  
*Senior*  
High Jump



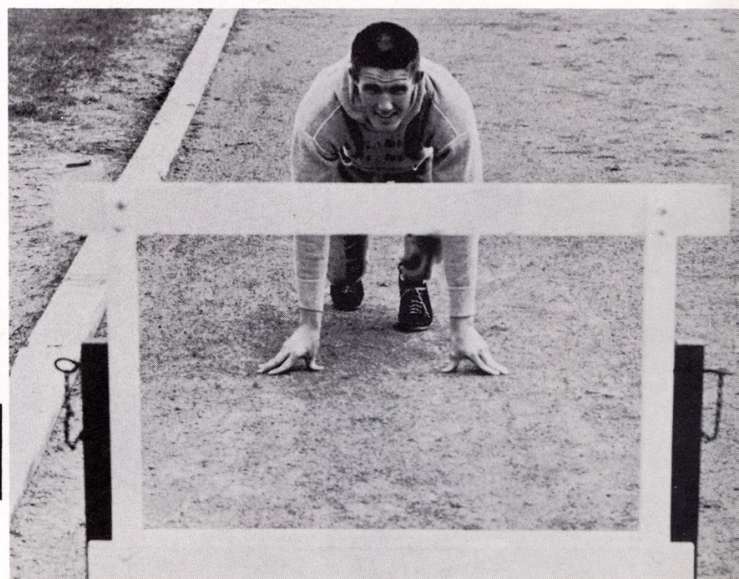
LARRY WITTE  
*Senior*  
Sprints



TOM MAPLES  
*Junior*  
LARRY EARLEY  
*Junior*  
Pole Vault



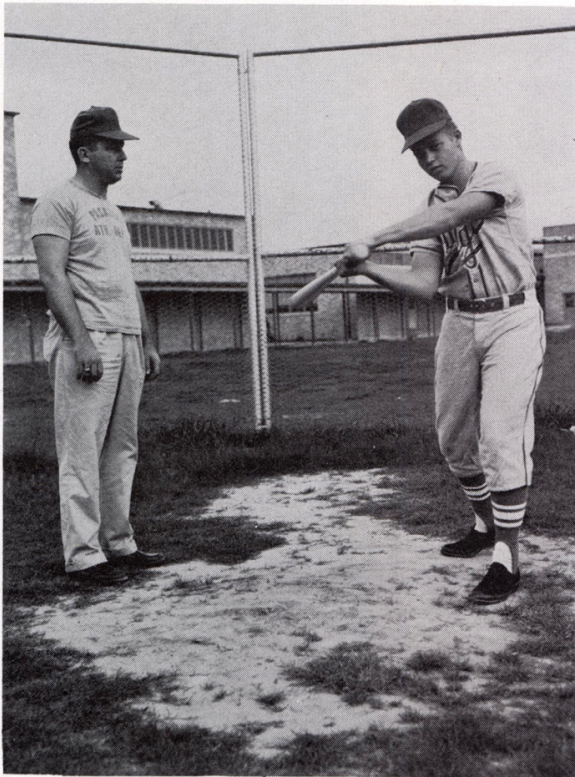
LARRY MAY  
*Senior*  
Hurdles  
MORRIS CHERRY  
*Senior*  
Hurdles



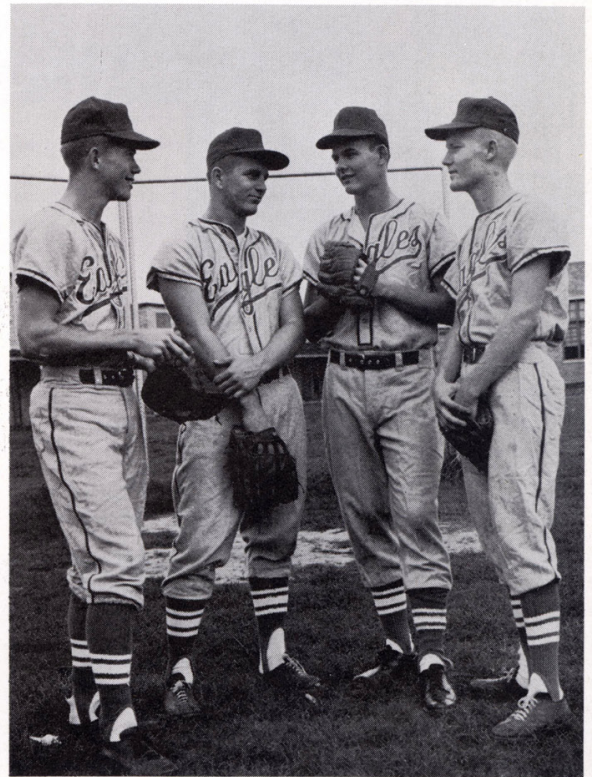
# BASEBALL 1957



Last year's squadmen are, front row: H. Rice, Graham, Farmer. Second row: Harrison, Fritsch, Starbuck, Winegar, V. Rice.



Coach John Maguire and his only returning letterman Ollie Bright. Coach Maguire coached the Eagles to the district championship in '56.



Pitchers are: Fritsch, H. Rice, Starbuck, V. Rice.

# GIRL SPORTS

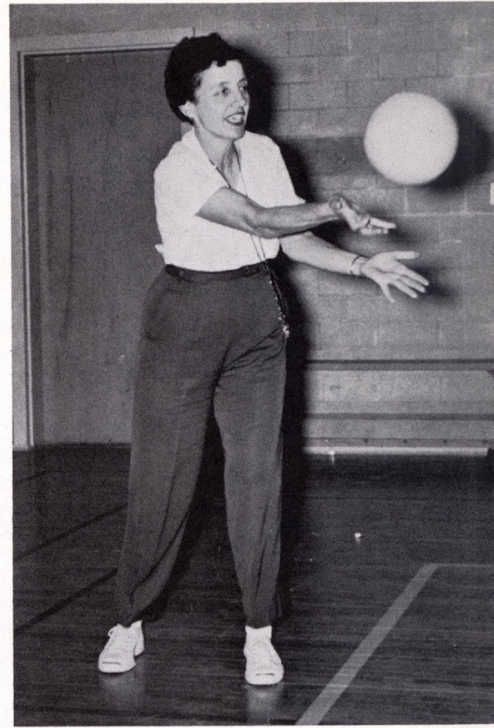
## TEACHERS

Physical education for girls at Pasadena High is designed to acquaint students with sports and activities that not only aid in their physical development but carry over into later life.

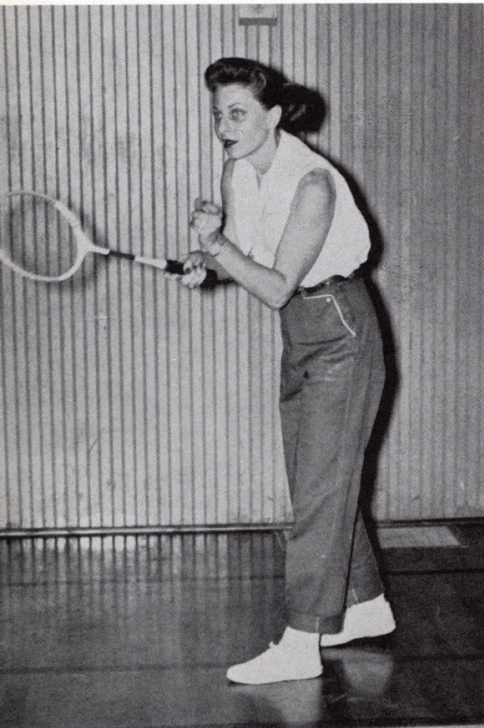
Teachers who led in this program are: Mrs. Jeanne Smith, Mrs. Gwen Webb, Miss Ernestine Osborne, Mrs. Margo Bishop, and Mrs. Nina Sue Forbes.



MRS. JEANNE SMITH



MISS ERNESTINE OSBORNE



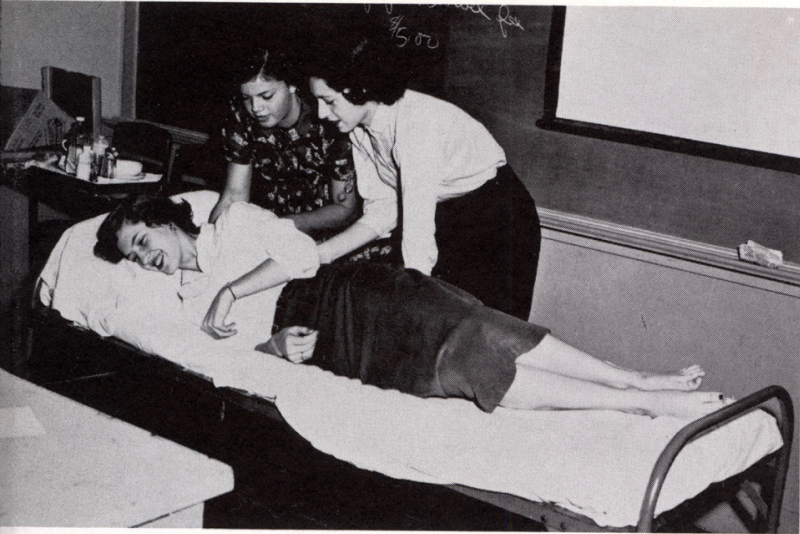
MRS. GWEN WEBB

MRS. MARGO BISHOP



MRS. NINA SUE FORBES





In future years the care of convalescents and small children will come naturally to the Senior girls, because they were required to take home nursing.

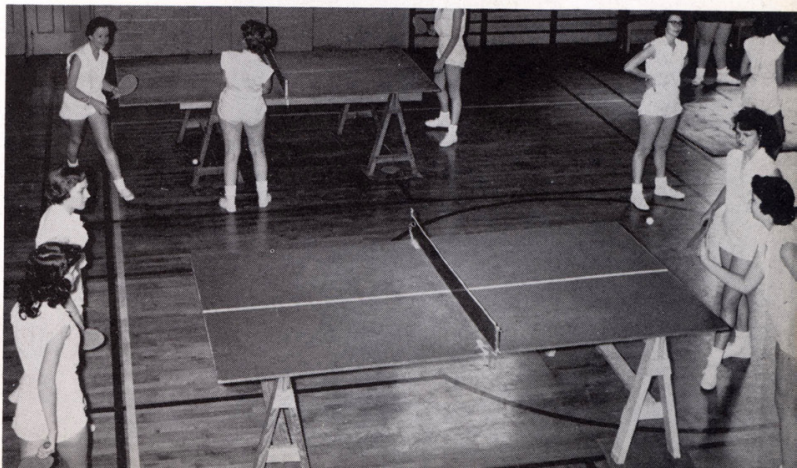
Marlene Guinn and Carolyn Derbes demonstrates the care of a bedridden patient, Linda Myrick.

Sophomore, Sondra Traxler flies above the heads of her classmates on the rings.



Fourth period Junior girls demonstrate a rhythmic activity in costume.

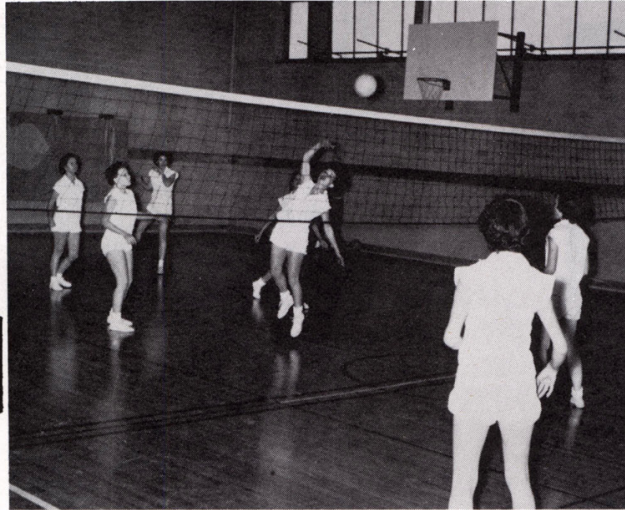
Sophomore girls, Vickie King, Sue Baygent, Diana Henckel, and Kay Corley enjoy a doubles ping-pong game.



# SENIORS

## PICKED TEAM

Miss Osbornes' fourth period won the volleyball picked team tournament with Janice Clemons, Carolyn Derbes, Patsy Posern, Marlene Guinn, Charlotte Stanley, Choyce Sinor, Dorothy Weghorst, Marjorie Boriack, Jeanette Turcotte, and Pat Rawlinson.



Hazel Sharp comes through for her team with a smashing spike.



## CLASS TEAM

Mrs. Forbes' second period won the volleyball class team tournament with Judy Waldrop, Janice Lewis, Beverly Womack, Hazel Sharp, and Sunshine Kelly.

# JUNIORS

## PICKED TEAM

Mrs. Smith's sixth period won the basketball picked team tournament with Mary Taylor, Mary Beth Dement, Geraldine Bender, Georgette Haynes, Teresa Barker, Armeen Lehman, Sandra Carr, Jean Finch, Sandra Estes, Barbara Jones, and Pedro, the mascot.



Sarah Woodall moves in close to guard Beverly Starkey.

## CLASS TEAM

Mrs. Smith's sixth period came out on top in the basketball class winning team tournament with Carol Willhite, Teresa Barker, Mary Beth Dement, Geraldine Bender, Van Valeta Campbell, Vonnie Lou Sandifer, Katherine Little, and Pedro again.



# SOPHOMORES

## PICKED TEAM

Mrs. Webb's sixth period basketball team won the picked team tournament with Mary Shelby, Reita Ledbetter, Cynthia Davis, Agnes Pehl, Carol Hawk, Sue Wolf, Babs Bowling, June Turner, and Susann Brown.



Mary Shelby and Carol Hawk guard Toni Mensing as she heads for the goal.



## WINNING TEAM

Mrs. Webb's winning team was composed of Sandra Grantham, Marsha Sager, Judy Murphy, Vicki Duggan, Betty Hillioss, Nancy Crow, Faye Weisinger, and Charline Grisham in the second period class.



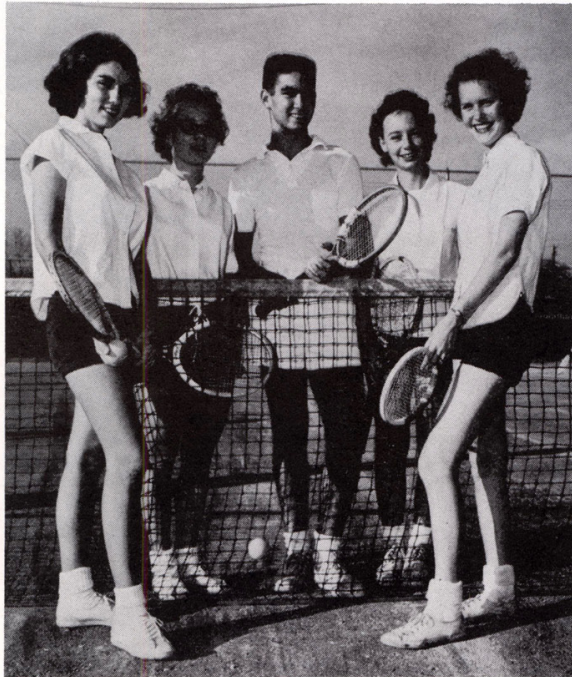
# TENNIS TEAM



Organization and election of officers for the tennis team.



Election returns show Janice Clemons, President; Arden Thayer, Vice President; Pat Crenshaw, Secretary; Hazel Sharp, Treasurer; Alan Thayer, Captain.



Tennis team in action! Hazel Sharp demonstrates a smashing serve.



Members of the tennis team are: Patsy Posern, Beth Scanlin, Babs Kelley, Marsha Sager, Pat Wells, Kay Newman, Joann Lantz, Janice Clemons, Hazel Sharp, Marlene Guinn, Pat Crenshaw, Arden Thayer, and Mrs. Margo Bishop, sponsor.

